



✂ Epsilon Stone

**Engineered Marble** - The Most Versatile Marble On the Planet has now landed in Australia, Direct From Spain & Distributed Only by Epsilon Stone.



Engineered Marble was conceived from a forward-looking understanding of the limitations of natural stone for use in modern construction due to its lack of homogeneity and its shortage as a raw material.



Now, as a result of a specialised stone processing technology, engineered marble has dramatically improved the way builders, architects and stonemasons are able to use this material across a far greater spectrum of industries, including residential, retail and commercial projects at a far more economical rate.



### **MAJOR BENEFITS:**

- Virtually Non-Porous (0.04%)
- 100% European Made
- A2 Euroclass Fire Rating
- Highest Heat & Humidity Resistance
- Suitable for **Indoor & Outdoor Use**
- Resistant to Water & Mildew
- More Economical than 100% Natural
- Ease of Maintenance & Cleaning
- Contains Similar Properties to Porcelain



# Why Engineered Marble?

## RETAIL & COMMERCIAL AREAS

Ease of maintenance, incredible hardness and a virtually non-porous surface make engineered marble the ideal choice for all high traffic areas.

### Ideal Uses Include:

Airports, Train stations, Hospitals, Shopping Malls, retail showrooms/Facades



Rolls Royce Showroom - Dubai (Flooring)



External Building Cladding - Bahrain

## INTERNALLY & EXTERNALLY RATED

Thanks to a unique treating process and UV resistance, engineered marble boasts the ability to be used for both indoor and outdoor applications where it weathers the elements with ease.

### Ideal Uses Include

Building Facades/cladding, Pool Coping Porticos, Alfresco Dining Areas + More

## FEELS RIGHT AT HOME

Incredible heat, mildew and humidity resistance, an A2 fire-class rating, a non-porous surface and its ease of cleaning make engineered marble the easy choice.

### Ideal Uses Include:

Bathrooms, Vanity Units, Splash-backs, Laundries, Feature/Media Walls, Fireplace Hearths, Island fronts, Bath Hobbs



Vanity Unit & Feature Wall - White Faraya / Bering

# Material Supplied by COMPAC (SPAIN)



All Epsilon engineered marble materials are proudly supplied by **COMPAC Marble Surfaces, Valencia, Spain.**

With over 40 years of design and stone innovation, **COMPAC, THE SURFACES COMPANY**, is the leading quartz and marble provider in Spain and a top 3 supplier worldwide, marketing high-quality decorative surfaces. Founded in 1975, **COMPAC** was the first Spanish company specialising in the manufacture and distribution of marble and quartz surface coverings.

Today **COMPAC** is a large multinational company, supplying millions of tonnes of materials world-wide and has continued to grow while preserving their flexibility and independent decision-making spirit.

## Certification.

All Epsilon engineered marble materials meet strict ISO9001 certification, as well as proudly displaying the Greenguard certification, due to its low resin and emissions count, plus its high fire rating (A2 Euroclass), making it suitable for sensitive areas and applications such as **schools, medical facilities and retirement homes**



Available in 12, 14 & 20mm Thicknesses (Classic Series Available in 20mm Only)

1240mm

3050mm



# Design Palette

\* Some Colours Available by Request Only \*



Classic White



White Teide



White Faraya



Madani



Blanco Micro



Micro



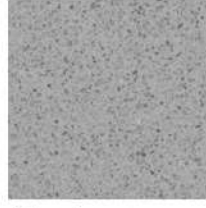
Dune



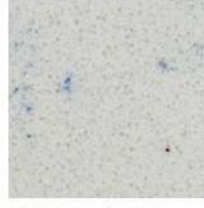
Classic Grey



Bering



Aluminum



Blanco Aura



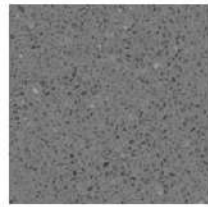
Sirocco



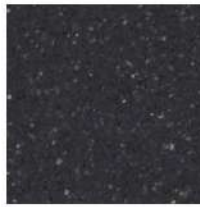
Basalt



Samoa



Palladium



Anthracite



Alfion



Valencia



Nacarado



Albufera



Beige Faraya



Crema



Nubia



Marfil



Or



Caramelo



Mandu



Sunset



Classic Brown



Eneus



Fidji



La Perla



Dakar



Classic Beige



Nilo



Travertine



Blanco Pulido



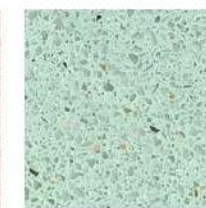
Cruivre



Papua



Mars



Cripto

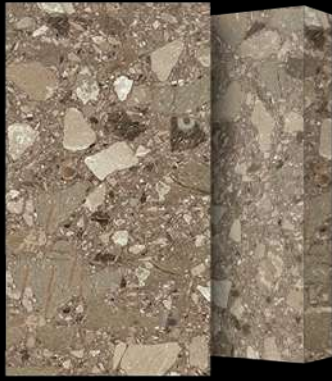


Jura

# Feature Colours - Available Now



*Classic Grey*



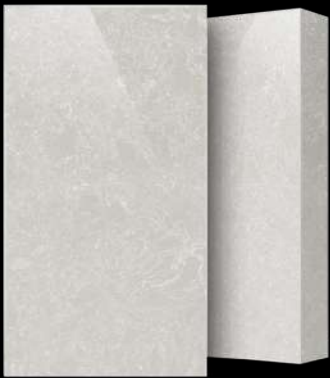
*Classic Brown*



*Classic Beige*



*Classic White*



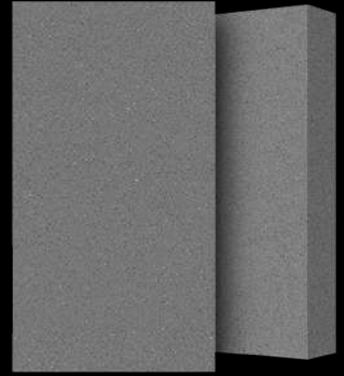
*Bering*



*Beige Faraya*



*White Faraya*



*Palladium*



*White Teide*



*Nacarado*



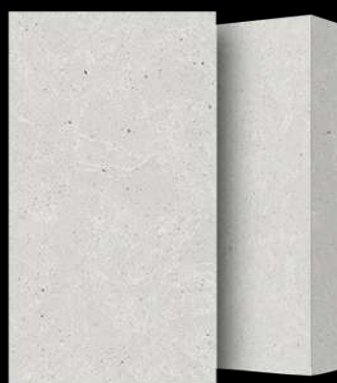
*Aluminum*



*Crema Valencia*



*Anthracite*



*Sirocco*



**Epsilon Stone**  
European Elegance

**REQUEST YOUR FREE SAMPLES**

A: 22 Lionel Rd, Mt Waverley

T: (03) 9543 7346

E: [info@epsilonstone.com](mailto:info@epsilonstone.com)